



Use of Krystol Mortar Admixture (KMA)[™]

SCOPE

Application Instruction 110 provides detailed instructions for using Krystol Mortar Admixture[™] (KMA). KMA is a dry powder added directly to the mortar during mixing. It contains Kryton's unique Krystol[®] technology that reacts with the cementitious materials in the mortar to form hydration crystals. These needle-like crystals block the capillary pores and micro-cracks within the mortar to dramatically reduce permeability and water absorption of mortar rendering over brick, block and other masonry walls.

STEP 1: SURFACE PREPARATION

1. The surface must be clean and free of dirt, oil, or loose debris.
2. It is strongly recommended that the surfaces be "saturated" with clean water prior to applying the rendering to achieve improved performance in adhesion, durability and reduced cracking.

STEP 2: MIXING

1. KMA is a dry powder that is added directly to the mortar during mixing. Trial batches are strongly recommended to assess the local plastic and hardened properties to determine appropriate mix designs.
2. Dose KMA at 2% by weight of cement—1 kg KMA per 50 kg cement.
3. Most KMA mixes will require less water than usual.
4. KMA can be added at any time during the batching process. However, the plastic properties may vary with the time of addition depending on the mix proportions and site conditions. Adjust the mixing sequence as necessary to optimize the mix for your application.
5. Allow KMA to thoroughly mix at medium/high speed for a minimum of 2 minutes or until the admixture is fully incorporated.

STEP 3: INSTALL MORTAR

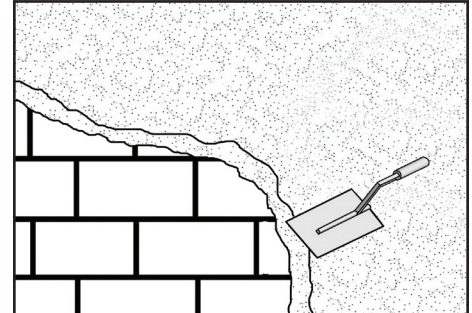
1. Install mortar as normal. For increased damp-proofing performance apply mortar to a greater thickness—up to 5 cm in 2 or more layers (see ASTM C926 for more details on application).
2. Continue occasional mixing as the material is being installed. Discard any material that shows signs of stiffening or setting—do not wet-up by adding water.

CURING

- Proper curing is essential to achieve the performance and benefits of KMA.
- Wet curing the mortar with a fog mist spray, sprinkler or wet burlap for 3 to 7 days is recommended. Protect fresh applications from wind and direct sunlight.

SHELF LIFE

KMA has a minimum shelf life of 24 months for sealed pails, and 4 months for open and properly re-sealed pails.



IMPORTANT NOTE

Proper curing is essential to achieve the performance and benefits of KMA.

SAFETY PRECAUTIONS

Cementitious compounds become caustic when mixed with water or perspiration and can cause serious chemical burns. Avoid contact with skin or eyes. Avoid breathing dust. Wear safety goggles, impervious gloves and long sleeves. The safety precautions for KMA treated mortar are the same as for regular mortar. See the Material Safety Data Sheet for more information.



Application Instructions

Application Instruction 110